

G100LI
ELECTRIC TRACTOR
INSTRUCTION MANUAL



Welcome to use the tractor.



- Before you use the tractor, please read the instruction manual carefully.
- This manual is a general one. We reserve the right to make technical modifications to the electric vehicle. In case of any discrepancy between the content of the manual and the actual product, the actual product shall prevail. The manual is for reference only.
- Vehicle operators must strictly adhere to ISO3691 "Safety Specifications for Mobile Industrial Vehicles", and it is strictly prohibited for untrained personnel to operate this vehicle.

Foreword

Before operating this truck, please read this manual carefully and fully understand how to use this truck. Improper operation may cause danger.

This manual describes the use and operation of different types of pallet stackers. When servicing the truck, make sure it matches your model.

Please keep it for future use. If this manual or warning/warning label is damaged or missing, contact your local dealer for a replacement.

This truck complies with EN 3691-1 (Industrial vehicles - Safety requirements and verification, Part 1), The standards of EN 12895 (Industrial vehicles - electromagnetic compatibility), EN 12053 (Safe industrial vehicles - test methods for the measurement of noise emissions), EN 1175 (Safety of industrial vehicles - electrical performance requirements) must ensure that the vehicle is used in accordance with the above purposes.

According to EN 12053, the noise level in the driver's ear is 69 dB(A).

According to EN 13059 (if the vehicle has pedals), the vibration is 0,85 m/s².

Attention:

- Hazardous waste that is harmful to the environment, such as waste batteries, waste oil and electronic products. If not properly disposed of, it will have a negative impact on the biological environment or human health.
- Waste packaging should be classified into solid waste bins according to the material, and collected by the local special environmental protection bureau. In order to avoid pollution, it is forbidden to throw litter at random.
- In order to avoid oil leakage when using the product, users should prepare some absorbable materials (waste wood chips or dry rags) to absorb the leaking oil in time. In order to avoid secondary pollution of the environment, used absorbable materials should be handed over to specialized departments in accordance with local authority regulations.
- Our products continue to improve, because this manual is only for the operation/maintenance of the truck for the purpose, so this manual can not guarantee other special circumstances. Please understand.



Note: In this manual, the symbols on the left indicate warnings and dangerous conditions that could result in death or serious injury if not followed.

Copyright

Copyright is reserved by the company mentioned in the CE standard at the end of this document.

Contents

Foreword

1. Proper use

2. Outline drawing

3. Main technical parameters

4. Safety specifications

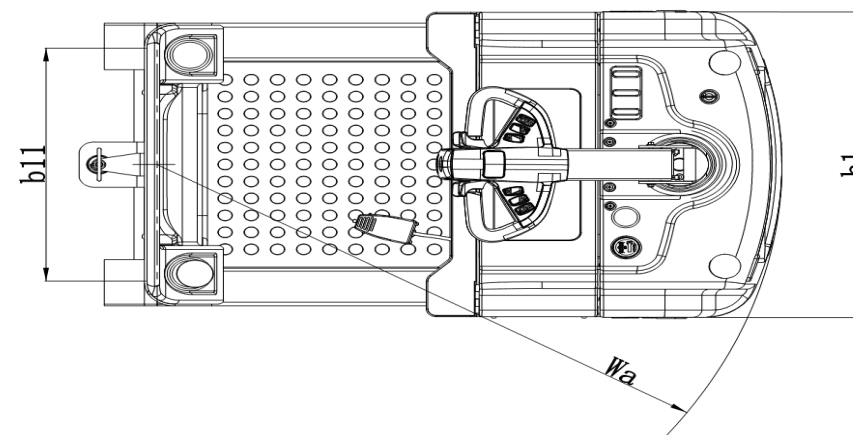
5. Instructions for use and operation

6. Maintenance

7. Common faults and troubleshooting methods

8. Schematic diagram

2. Outline drawing



3. Main technical parameters

Characteristics	1.1	Manufacturer's type designation		G100LI
	1.2	Power(battery,diesel,petrol gas>manual)		Battery
	1.3	Operator type		Station drive type
	1.4	Load capacity/Rated load	Q (lbs)	6,600
	1.5	load centre distance	y (in)	41.1
	1.6	Service weight	Lbs	1,814
Wheel base	2.1	Tires		PU
	2.2	Tire size,front	In	Φ9.8x5.0
	2.3	Tire size,rear	In	Φ7.1x3.0
	2.4	Wheels,number front/rear(x=driven wheels)		2/1x
	2.5	Track,rear	b11(in)	24.3
Basic dimensions	3.1	Traction coupling height range	H10(in)	9.2/12.9/13.5/17.2
	3.2	Overall length	l1(in)	52.9
	3.3	Overall width	b1(in)	31.9
	3.4	Ground clearance,centre of wheelbase	m2(in)	2.6
	3.5	Turning radius	Wa(in)	48.9
	3.6	Height of tiller in drive position min/max	H14(in)	46.7/51.6
Performance	4.1	Lowering speed,laden/unladen	Mph	3.7/4.3
	4.2	Rated traction force	N	600
	4.3	Maximum traction force	N	2000
	4.4	Max.gradeability, laden/unladen	%	3/15
	4.5	Service brake		Electromagnetic braking
Motor	5.1	Drive motor power	Hp	4.0
	5.2	Battery voltage / capacity	V/Ah	24/210
	5.3	Battery weight +/-5%	Lbs	418.9
Others	6.1	Type of drive control		Communication speed control
	6.2	Turning type		Electronic assistance
	6.3	Sound level at driver's ear acc. to EN 12053	Db(A)	≤70
	6.4	Traction coupling, in accordance with DIN 15170 type		Plug-in type

4. Safety specifications



Warning

Before using this truck, pay attention to the following matters:

- (1) The stackers are only used indoors where the ground is flat and hard. Do not use in a corrosive environment such as flammable and explosive or acid and alkali.
- (2) Only trained and recognized drivers can operate the vehicle.
- (3) Read this manual carefully and master the vehicle performance before operating the vehicle. Check the vehicle carefully before each use. It is forbidden to use a faulty vehicle and repair it yourself without training.
- (4) Overload is strictly prohibited.
- (5) When handling,the center of gravity of the goods must be within two cargo forks. Do not handle loose goods.
- (6) When the fork enters and exits the pallet, the vehicle should drive slowly.
- (7) It is strictly prohibited to press the lifting or lowering button when the vehicle is driving.It is strictly prohibited to quickly and frequently switch the lifting or lowering button because rapid and frequent lifting or lowering will cause damage to the vehicle and goods!
- (8) Do not allow heavy objects to be quickly loaded on the fork!
- (9) Do not place the goods on the truck for a long time!
- (10) It is strictly prohibited to make a sharp turn on the narrow passage.It should slow down and turn slowly to ensure the safety of personnel and goods.
- (11) When the truck is not in use, the fork should be lowered to the lowest position.
- (12) This truck is used on flat ground or flat working platform and Long-term parking on slopes is strictly prohibited.

4.1 Safety Operation Specifications

(1) Driver training:

Attention!

With the same technical parameters of each vehicle braking, acceleration and other characteristics may be different.Get familiar with the operation before driving the vehicle.

(2) Wear when driving:

Attention!

Please wear safety shoes and overalls.For safety, please do not wear loose clothes, so as not to be caught and dangerous.

(3) Rules must be followed:

Attention!

Do not drive when you are tired, distracted, under the influence of narcotics or alcohol.

(4) Safety of workplace:

Attention!

Vehicles are only used indoors with flat and hard ground and are strictly prohibited from being used in corrosive environments such as flammable and explosive or sulfuric acid.

A. Maintain good road conditions and no obstacles.

B. The workplace needs plenty of light.

C. Fire-fighting equipment must be available in the place where the vehicle is used and charged and the fire extinguisher must meet the requirements for extinguishing solid combustibles and electrical fires.

D. The value of the vehicle noise in the manual refers to the value measured by the new vehicle under the condition of a level, smooth and hard road. If your road condition is not good or the wheel is damaged, the noise of the vehicle may become louder.

(5)  the integrity of the vehicle:

Warning: Don't modify your truck

A When operating, inspecting and servicing your vehicle, follow the safety rules and the rules of your workplace.

B No changes may be made to the vehicle without authorization. Modifying the vehicle may affect the safe operation of the vehicle. It is prohibited to make changes to vehicles that may affect the vehicle's carrying capacity, stability and safety without the written permission of the original vehicle manufacturer, authorized agent or consignor. When changes are approved by the manufacturer or contractor, appropriate changes should also be made to the load pallets, labels, labels and operation and maintenance manuals.

Users can make changes to electric industrial vehicles only if the vehicle manufacturer is no longer operating and there is no contractor. However, the user must:

a) Arrange for vehicle changes to be designed and tested and the process carried out by engineering experts in industrial vehicles and safety.

b) Maintain permanent records of the design, testing and execution of vehicle changes.

c) Approve and make appropriate changes to load pallets, labels, labels and instruction manuals.

d) Attach a permanently visible label to the vehicle to indicate how the vehicle was changed, the date of the change and the name and address of the organization that completed the work.

(6) Establish safe operating procedures

Before using the vehicle, please Establish safe operating procedures according to the actual situation. Fully consider safety when developing work procedures.

(7) In the case of unsafe operation is strictly prohibited to operate the vehicle:

A It is strictly prohibited to use the vehicle in the place where the ground is uneven, the road is not smooth and other unsafe factors exist, and it is strictly prohibited to lift goods on the ramp.

B Never use a broken down vehicle.

C Make sure to check the vehicle every day and repair or replace it if any abnormal condition is found.

(8) It is prohibited to use the vehicle with overload:



Warning: Do not overload the use of the vehicle, overload use will damage the vehicle, or cause injury to personnel

(9) Use appropriate pallets:

The size of the pallet used should be appropriate, not too wide or too large.

(10) Electrical system inspection:

Attention!

Turn off the key switch and the emergency isolation switch when checking the electrical system.

4.2 Safe driving regulations

(1) Check the safety situation around the vehicle

Attention!

- Make sure no one is around your vehicle before you drive it.
- When carrying a large cargo, the line of sight is blocked by the cargo, please back up or be guided by others.
- When backing up, make sure no one is around the vehicle.
- Someone should guide you when you are driving in narrow passages.
- Drivers should stop at intersections or other places where the line of sight is blocked and make sure no one is left or right before driving.
- Pay attention when driving a vehicle.



Be careful: Unlike ordinary vehicles, the driving mechanism of the vehicle is installed in the front of the vehicle. The speed of the front swing of the vehicle is relatively large when turning, so when the front of the vehicle is close to other objects, it must be slow to drive or turn to prevent collision.

(2) Reckless driving is strictly prohibited

Attention!

- Do not start, brake or steer suddenly. Sudden starting or braking will cause the cargo to fall. Making a sudden turn when driving can cause the vehicle to flip over and cause a serious accident. Slow down and turn carefully.
- Follow all safety regulations on the job site, slow down and honk your horn when driving past other trucks or vehicles. Don't drive in a bad line of sight.
- Make sure there is a gap between the vehicle and the entrance and exit.

(3) Do not drive by the roadside;

Attention!

Make sure there is enough distance between the vehicle and the curb or edge of the platform. When driving on a narrow road or platform, keep a certain safe distance from the edge to prevent the vehicle from falling.



Warning: Do not steering or loading on ramps, otherwise the truck will be in danger of tipping over.

4.3 Operation Specifications

Attention!

The vehicle can only carry the goods below the rated weight.

- 1) Overload work is prohibited
- 2) Partial load handling is prohibited
- 3) No passengers on vehicle
- 4) Do not suddenly operate the handle
- 5) Do not use the vehicle as a tractor
- 6) The driver should be especially careful when handling ultra-wide goods, turn slowly, the goods should be balanced, the lifting should be slow, and pay attention to the safety around.
- 7) The faulty repaired vehicle should be parked in a place that does not prevent traffic. The fork is lowered to the lowest position, and a warning sign is hung, and the key is removed.
- 8) When protective equipment such as door frame protective cover is not installed, the machine cannot be operated.
- 9) Pay attention to avoid wind hazards when loading.

4.4 Precautions after work

1) Parking: Park the vehicle in the designated place. It is forbidden to park the vehicle on the slope.

Do the following before leaving the vehicle:

- a) The fork is naturally lowered to the lowest position;
- b) The steering wheel hits the middle position;
- c) Turn off the key switch.

2) Cleaning the vehicle:

Attention!

Use compressed air to clean the car's electrical system. Do not use water to clean the electrical system.

3) Charging:

Keep a record of charging. Refer to the Battery operation section for charging methods.



Warning: There can be no open flame in the charging station, otherwise it will cause an explosion or fire.

5. Instructions for use and operation

1. Emergency reverse

If you touch the reverse switch while working at close range, the truck will move in the direction of the front fork (as shown in Figure 1). An emergency reverse cannot prevent all injuries.

2. Horn

For warning reminders (as shown in Figure 1).

3. Lifting & Lowering

Push the lifting button (as shown in Figure 1) until the front fork reaches the desired height and release the button

Lifting &
lowering

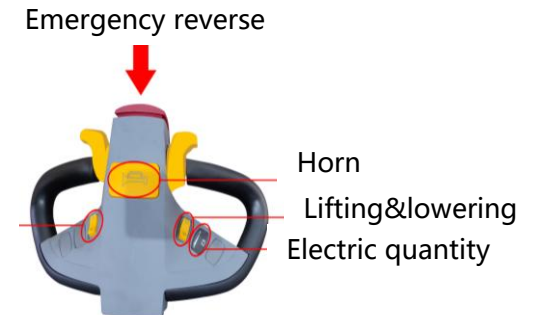


Figure 1

4. Battery

Show the remaining power (as shown in Figure 1)

5. Driving

Push the forward/backward button in the direction you want to travel. The further the button moves from the neutral position, the faster the truck moves. (as shown in Figure 2)

6. Drive slowly

Press the turtle switch on the control handle and turn the forward/backward rocker arm. (As shown in Figure 2)

7. Key switch

Open the truck by inserting the key into the keyhole and turning it clockwise (as shown in Figure 2). Turn the truck off by turning the key counterclockwise. Always turn off the key when leaving the truck.

8. Power off

Press the red scram switch to disconnect the battery and cut off all power (as shown in Figure 3). Whenever the truck does not work properly, disconnect the battery. The key switch won't cut off all power to the truck. If the truck is not working properly, do not use it and report the problem to your supervisor.

9. Braking

When the handle of the vehicle is in use, the handle can be used normally in the section B through the micro switch. In order to ensure the safety of users, the handle cannot be used normally in the section A and C. (as shown in Figure 4)

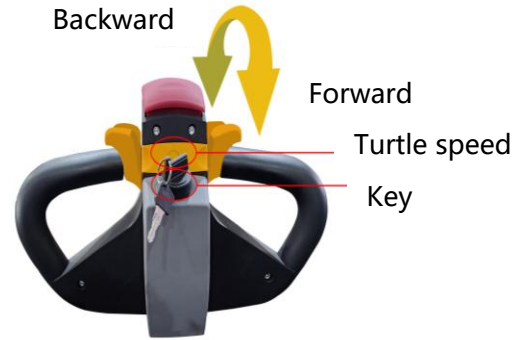


Figure 2

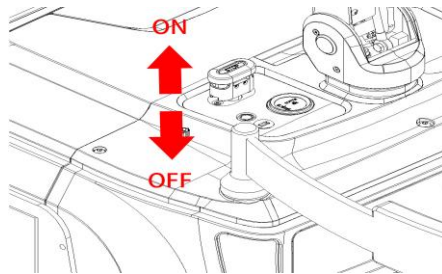


Figure 3

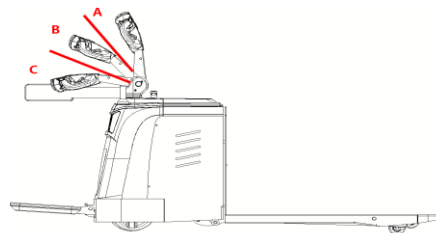


Figure 4

10. Know the danger



A. Make sure your brakes work

Test the brakes on the truck at the beginning of each trip.

B. Slippery ground, slow driving

Powder or liquid spills can lead to slippery floors. Slow down or you may lose control of steering and braking. Be careful and allow longer parking distances. Do not run over objects on the floor



11. Turning

You can control the steering by moving the control handle from side to side. For example, this diagram shows the direction the truck can turn when the control handle is moved to the approximate position shown (as shown in Figure 5).

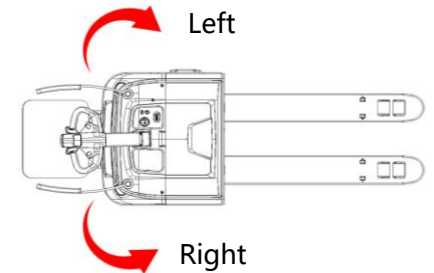


Figure 5

12. Drive steering

Turn carefully when driving the truck. The power plant will swing in the opposite direction. Make sure you have space and be aware of people in the area. (as shown in Figure 6)

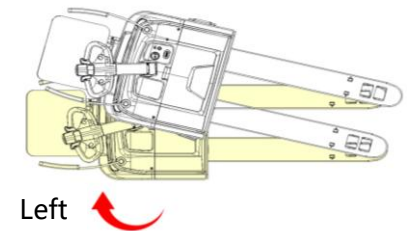


Figure 6

6. Maintenance

Note: Untrained personnel are not allowed to repair the vehicle

6.1 Whether the vehicle can be used satisfactorily depends on careful maintenance. Neglect of maintenance can endanger personal safety, damage vehicles and property. Therefore, when in use, routine checks should be frequently made to eliminate abnormal phenomena in time. Do not use a faulty vehicle to ensure safety and extend the service life of the vehicle.

6.2 Maintenance: The maintenance of the vehicle is generally divided into three levels, that is, daily maintenance, first-class maintenance, second-class maintenance.

Daily maintenance: Should be carried out once a day. The main content is to keep the body surface clean, clean the battery surface, check whether the power cord is firm and the chain tightness is normal.

First-class maintenance: Maintenance once a week, in addition to daily maintenance content, it should focus on checking whether the work of each component is normal, whether components are loose, whether the chain tightness is appropriate, whether the chain joint connection pin is bent and twisted, whether the inner and outer door frame up and down movement is normal, whether the hydraulic joint oil leakage, whether the mechanical part has abnormal wear, Whether the electrical part has abnormal temperature rise and spark. If found abnormal phenomenon, you should adjust and remove in time.

Second-class maintenance: should be carried out on schedule, and according to the following requirements for a comprehensive inspection of the vehicle.

a. **Mechanical maintenance:** once every six months. The main content is to lubricating the transmission gear and bearing of the drive wheel, adding lubricating oil to the rotating joints, and checking whether the fasteners are tight, whether the wheels are flexible, and whether the fork lift is normal. Clean up the dirt and dust accumulated on the friction plate of the electromagnetic brake, and adjust the gap between the friction plates to the appropriate distance. The vehicle running noise after maintenance is not more than 70 decibels.

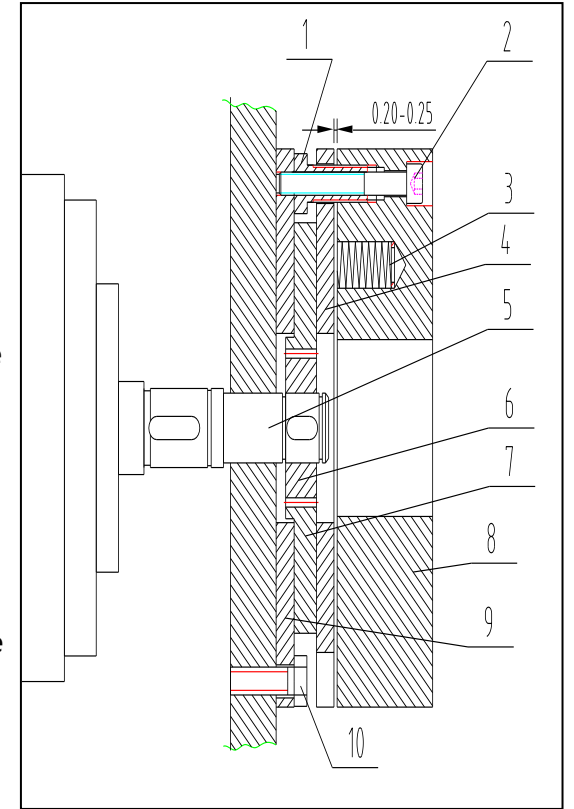
b. **Hydraulic maintenance:** every 12 months. Check whether the cylinder is in normal condition, whether there is internal leakage and external leakage, hydraulic joints, hydraulic hose is reliable without leakage phenomenon. Whether the hydraulic oil is clean, usually replace the hydraulic oil once every 12 months. Hydraulic oil adopts ISO oil standard. When the ambient temperature is $-5 \sim 40^{\circ}\text{C}$, HL-N46 or HL-N68 is used, and when the ambient temperature is $-35 \sim -5^{\circ}\text{C}$, HV-N46 or HV-N68 low-temperature hydraulic oil is used. The replaced waste oil shall be disposed of according to the relevant local regulations.

c. **Electrical maintenance:** every three months, check whether the line is loose, remove the dirt, ash, carbon deposits of the motor, check the wear of the brush, and replace the brush as appropriate.

6.3 Adjustment of brake clearance:

① hollow screw ② connecting screw ③ spring ④ armature ⑤ motor shaft ⑥ spline sleeve ⑦ friction plate ⑧ electromagnetic coil ⑨ installation cover ⑩ installation screw

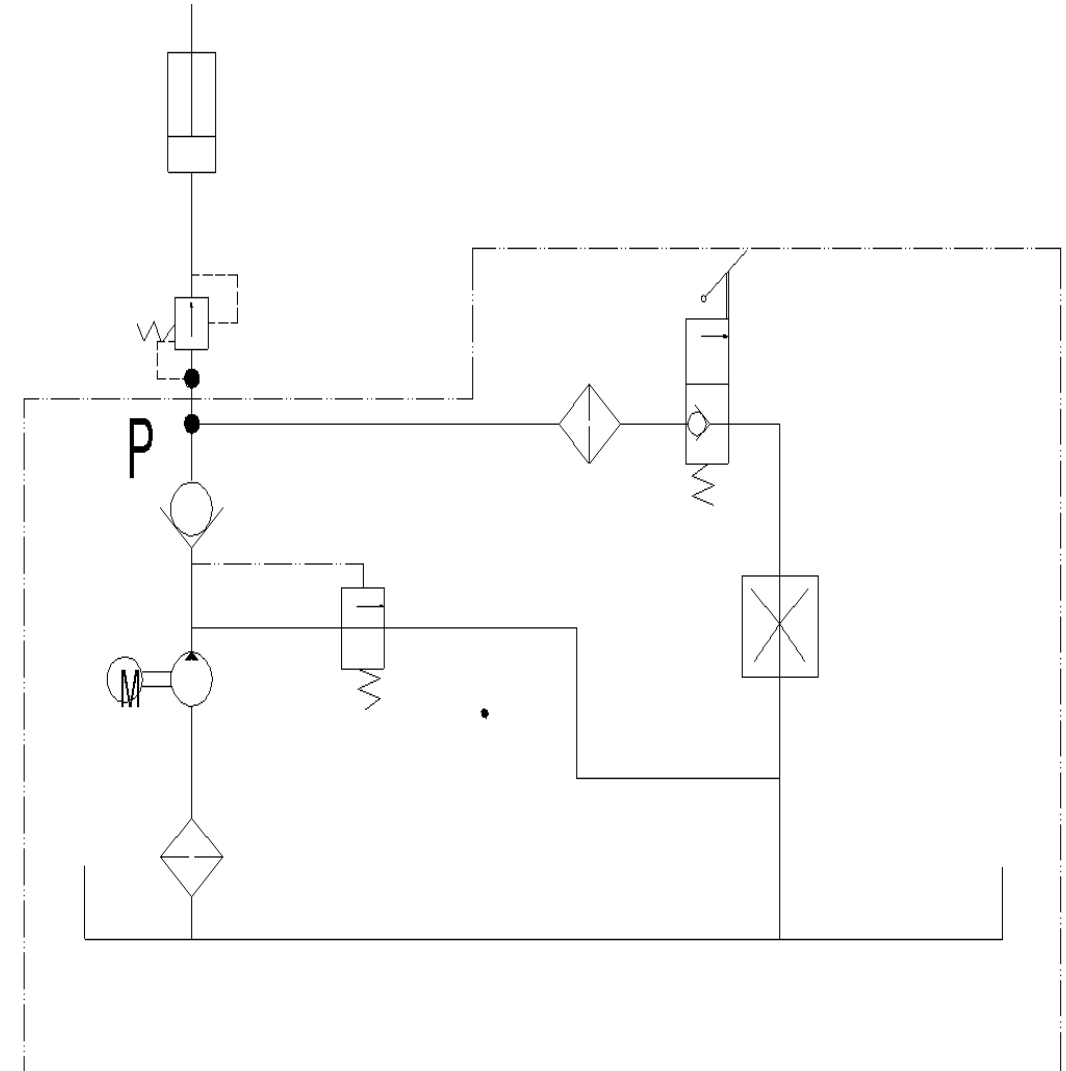
The structure of the brake is shown in the figure. After the vehicle is used for a period of time, the braking performance of the brake will decrease with the wear of the brake disc, or the brake disc cannot be released when it is locked, so the brake gap needs to be adjusted. As shown in the figure, in the braking state, first check the gap between the brake disc and the magnetic steel with a gauge, if the gap is greater than 0.5mm, it is necessary to adjust the gap, and the dirt and dust on the friction disc should be cleaned before adjustment. When adjusting, first loosen the connecting screw ②, then adjust the length of the adjusting screw ①, and then tighten the fastening screw, after adjustment, the gap between the brake disc and the magnetic steel should be between 0.2-0.3mm. When adjusting, pay attention to the balanced adjustment of the three adjusting screws, so that the gap between the brake disc and the magnetic steel is uniform around the adjustment. After adjustment, switch on the brake with 24V DC power supply, you should be able to hear the crisp sound of the brake.



7. Common faults and troubleshooting methods

Serial number	Breakdown	Reasons	Solutions
1	The truck will not start (the contactor will not work)	① The fuse wire of the control circuit has been burned out	Replace
		② The power switch is in poor contact or damaged	Repair or replace
		③ The fuse of the main circuit has been blown	Replace
		④ The electric lock switch is in poor contact or damaged	Repair or replace
		⑤ The battery connection is loose or disconnected	Screw down
	The truck won't move (Contactor operation)	① The magnetic brake beside the driving wheel is not sucked, and the vehicle is in the braking state	Repair or replace
		② The carbon brush of the walking motor is worn or the commutator is in poor contact with the carbon brush	Repair or replace
		③ The excitation coil of the traveling motor is broken or the line end is in poor contact	Repair or replace
		④ Poor contact of contactor	Repair or replace
		⑤ The MOSFET tube circuit board is faulty	Repair or replace
2	Stackers can only go forward (or backward)	① The contactor is in bad contact or burned out ② The circuit board is faulty	Repair or replace Repair or replace
3	The truck cannot stop while driving	The contactor contact is damaged and the moving contact is out of position	Cut off the power supply and replace the contactor contact
4	Brake failure	① Mounting bolts of microswitches are loose or damaged ② The parmagnetic brake wiring is loose or the parmagnetic brake is damaged ③ parmagnetic brake disc wear	Adjust or tighten the bolts, or replace the microswitch Tighten the bolt or repair the parmagnetic brake Replace disc
5	Steering jam	① Steering gear bearing damage ② Steering gear bearing lack of oil or too much sticky dust	Change bearing Clean bearing
6	The driving wheel steering is heavy, there is noise, and the motor is in an overload state	① Gear and bearing have foreign bodies stuck ② Bearing installation gap, or ring off ③ Front wheel bearing damaged	Clean or replace bearings Ring off, reinstall, adjust the gap Change bearing
7	The fork does not rise	① overload use ② The relief valve pressure is too low ③ The lifting cylinder has abnormal internal leakage ④ Hydraulic oil is not enough ⑤ Battery voltage is not enough ⑥ The control hand is not in the horizontal or vertical position, and the oil pump motor is not powered ⑦ oil pump motor damage ⑧ Oil pump damage ⑨ The lift button switch is damaged ⑩ Electric lock not opened or damaged (11) Battery voltage is seriously insufficient	Load reduction Turn up Replace seal Add appropriate amount of filtered hydraulic oil Battery charging Improper operation Repair or replace Repair or replace Repair or replace Repair or replace charging
8	The fork does not fall after it rises	① Overload deformation of the inner door frame ② The outer door frame is overloaded and deformed ③ The door frame roller is stuck ④ The portal frame guide rod is bent ⑤ The oil return hole is blocked ⑥ Solenoid valve of hydraulic station is out of control	Repair or replace Repair or replace Repair or adjust Repair or adjust Clean Troubleshoot the solenoid valve

Hydraulic schematic diagram



Electrical schematic diagram

