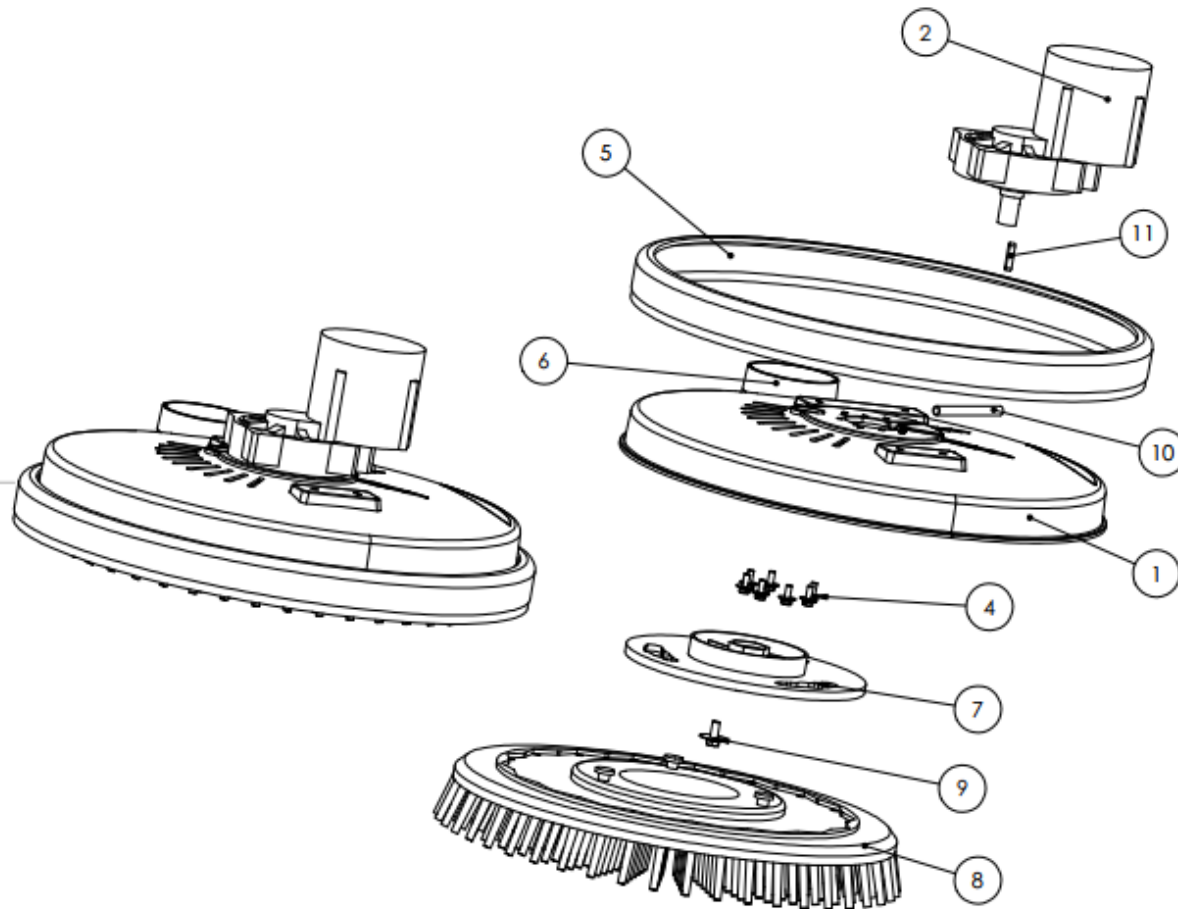


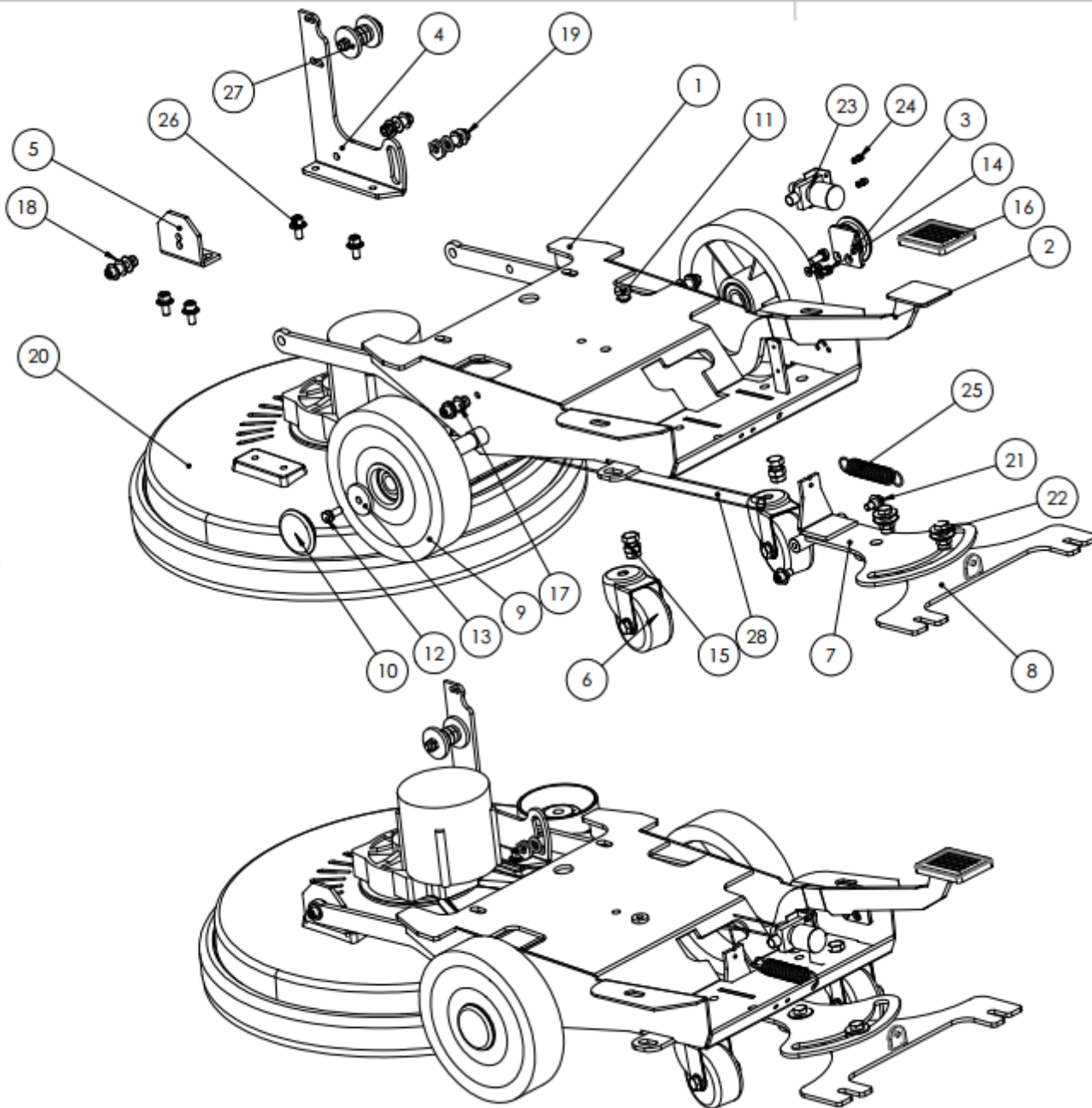


GNT
MATERIAL HANDLING EQUIPMENT

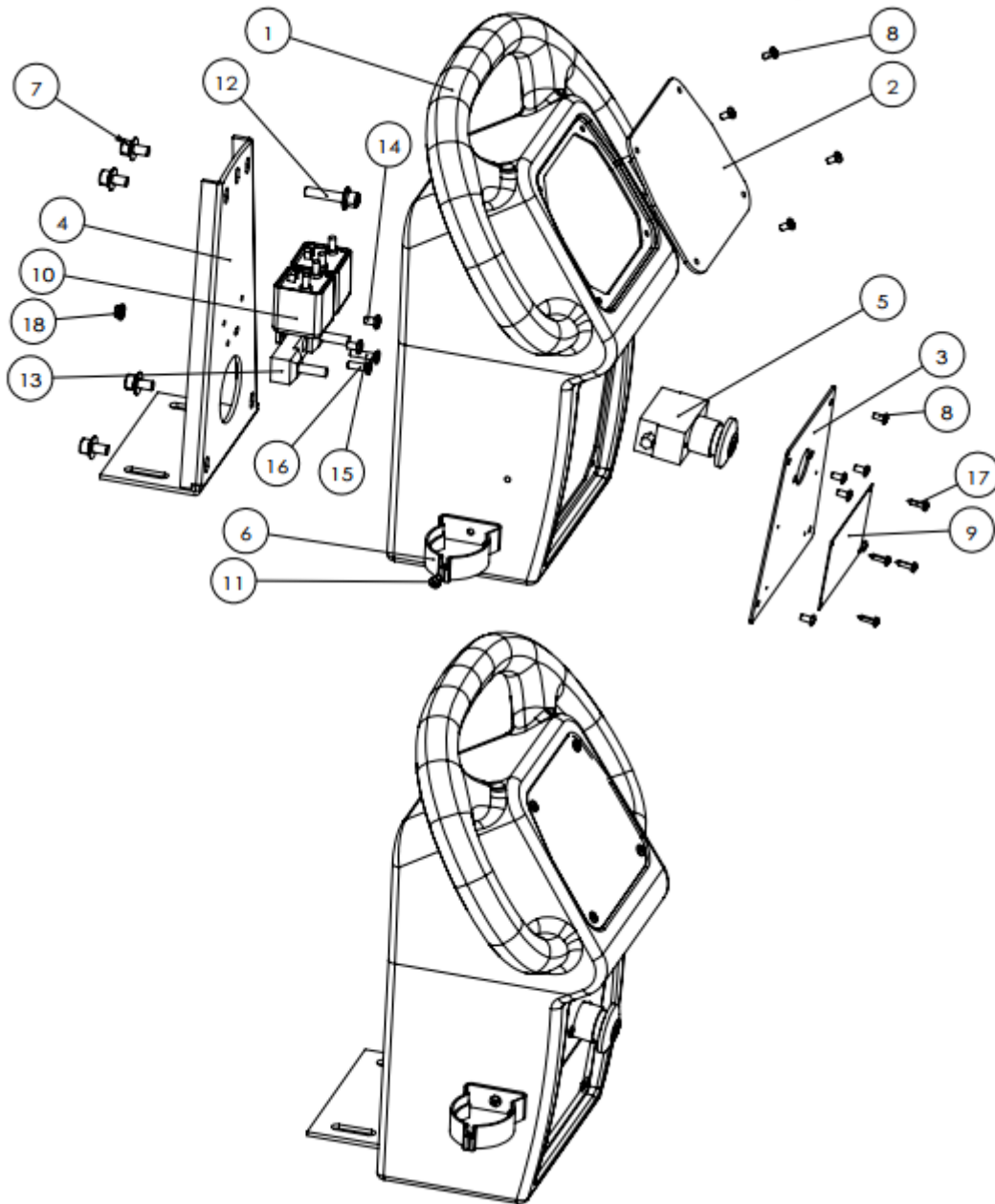
GFC50
Walk Behind Floor Washer
PARTS MANUAL



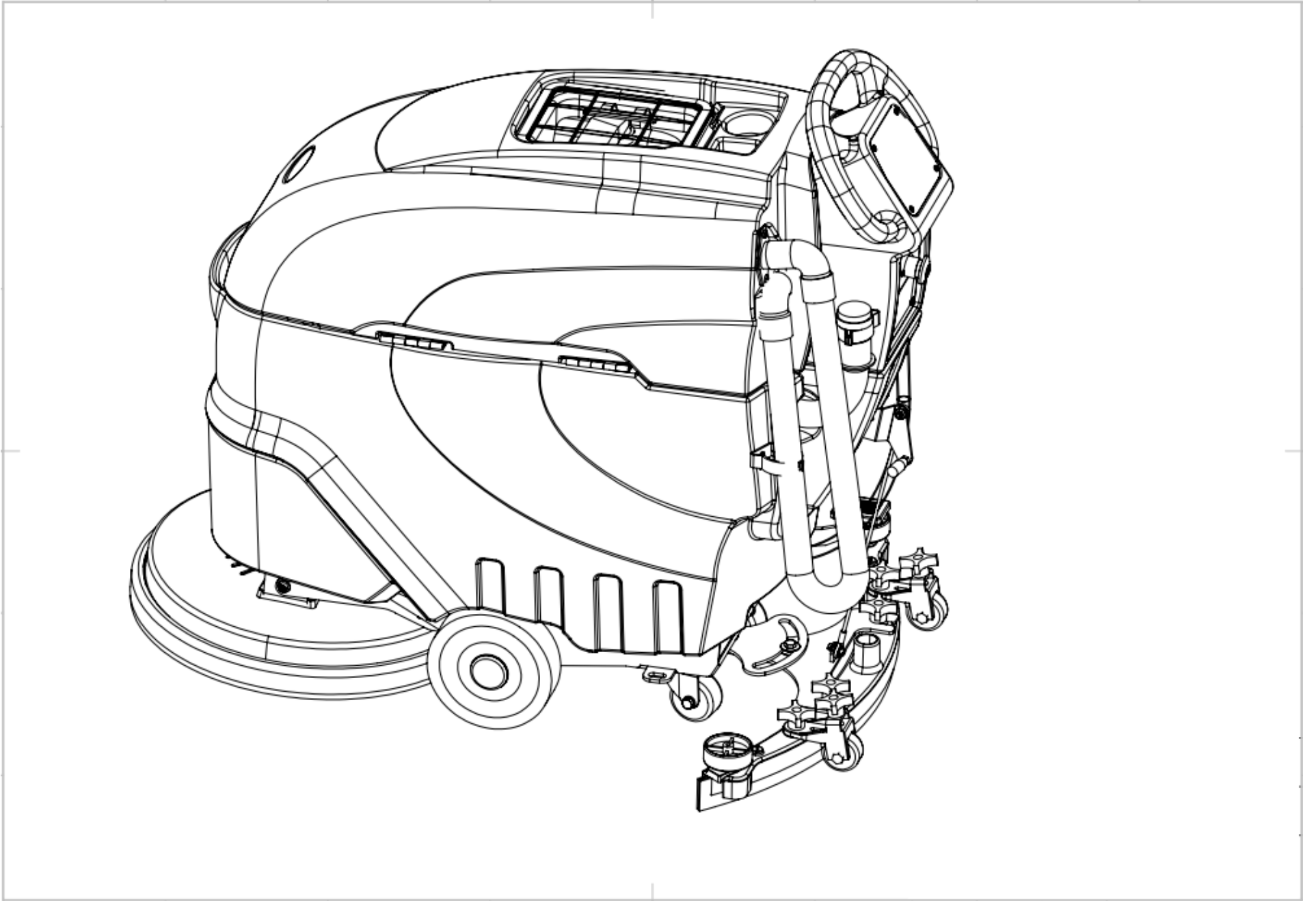
Project number	Item name	Quantity
1	Front cover of the brush	1
2	Brushless motor	1
3	Bolt + flat washer + spring washer	6
4	Bolt + flat washer + spring washer	1
5	Brush cover	1
6	Fender wheel	1
7	Flange for brush installation	1
8	19 inch brush	1
9	Bolt + flat washer + spring washer	1
10	Outlet pipe of the brush	1
11	Key pin	1

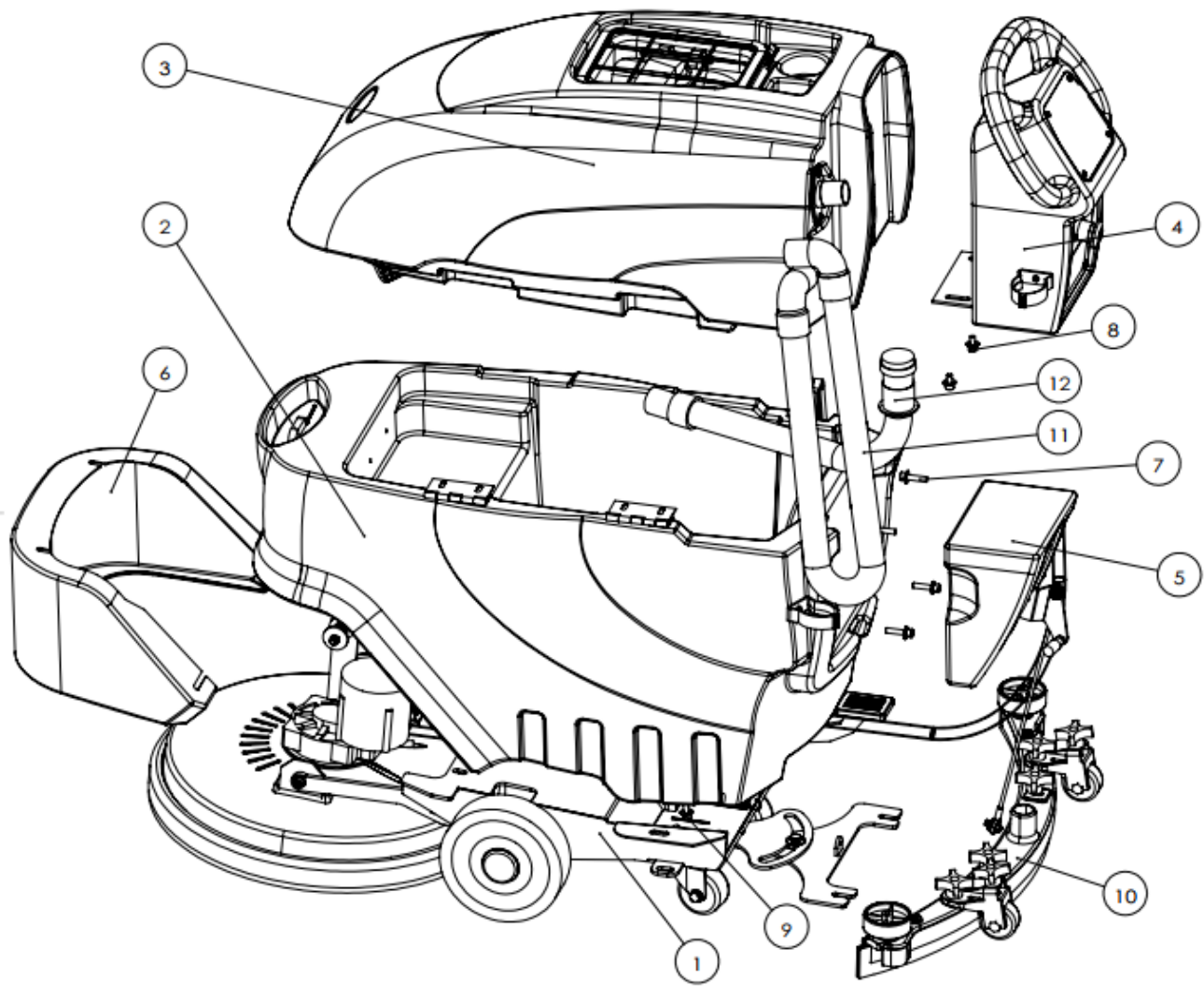


Project number	Item name	Quantity
1	Chassis welded parts	1
2	Brush motor lifting structure	1
3	Pedal limit plate	1
4	Right bracket of the brush cover	1
5	Left bracket of the brush cover	1
6	3 inch universal wheel	2
7	Suction limit plate	1
8	Suction mounting plate	1
9	Rubber wheel	2
10	Wheel end cover	2
11	O-ring	1
12	Bolt + spring washer	2
13	Flat washer	2
14	Flat Head Socket Cap Screws+ lock nut	2
15	Bolt+lock nut	2
16	Pedal plate	1
17	Socket head cap screw + flat washer + bushing + spring washer + lock nut	2
18	Socket head cap screw + flat washer + bushing + spring washer + lock nut	2
19	Socket head cap screw + flat washer + bushing+limit nut+ spring wire2 0017 L25	1
20	Brush assembly	1
21	Socket head cap screw + flat washer + bushing	2
22	Bolt + flat washer + bushing + lock nut	2
23	Water valve	1
24	Hexagon socket truss head screws + lock nut	2
25	Spring wire 2 0018 L110	1
26	Socket head cap screw +spring washer + flat washer	4
27	Socket head cap screw +flat washer + bearing + lock nut	1
28	Connection pipe for the water outlet of the brush	1

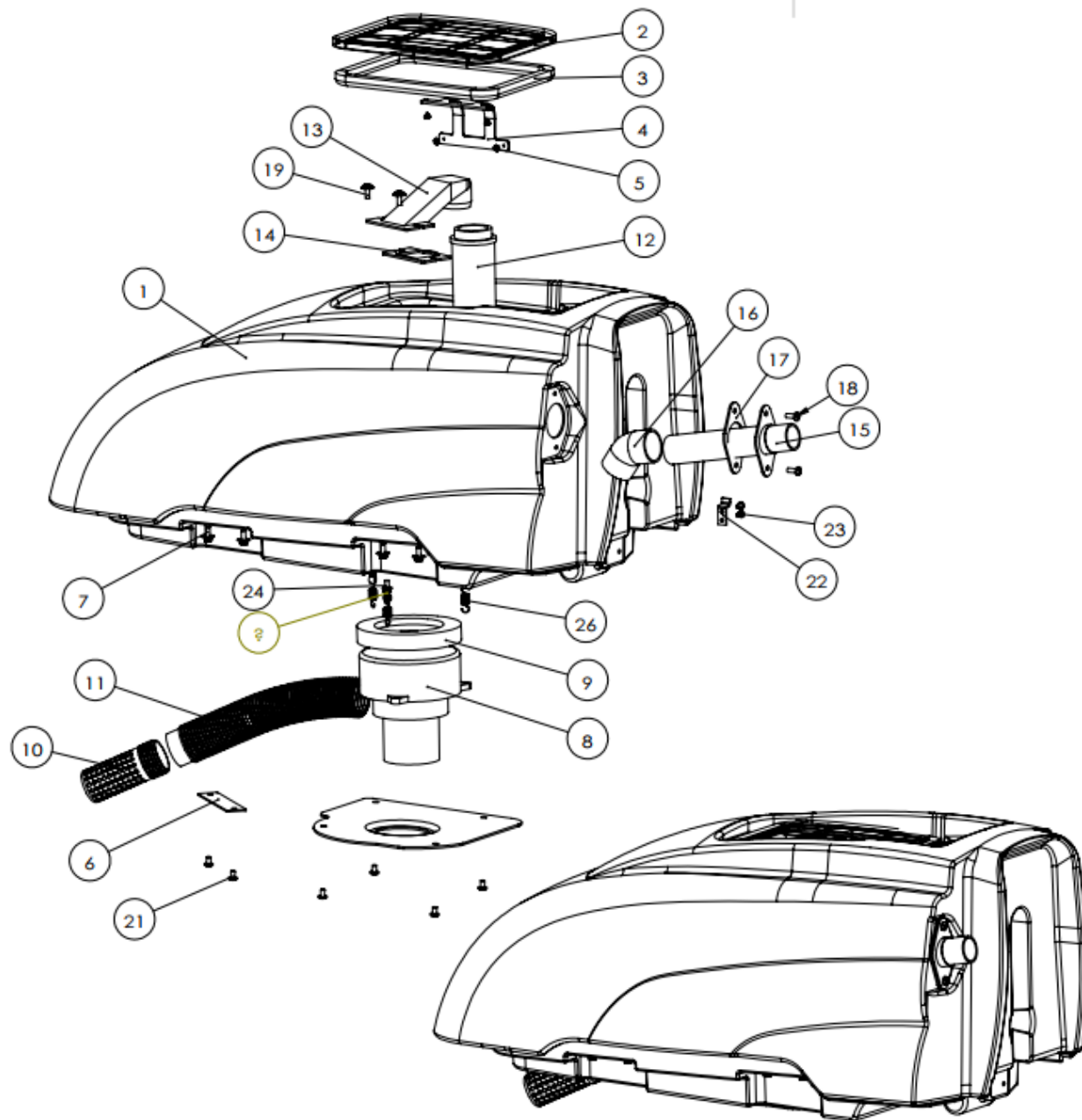


Project number	Item name	Quantity
1	Operating console	1
2	Control panel	1
3	Emergency stop switch panel	1
4	Control console bracket	1
5	Emergency stop	1
6	Water pipe clamp	1
7	Socket head cap screw + spring washer + flat washer	4
8	Flat head hex socket	10
9	Nameplate	1
10	Contactora	2
11	Phillips Large Pan Head Screw	1
12	Socket head cap screw + spring washer + flat washer	1
13	Fuse Holder	1
14	Flat-head hex socket	2
15	Flat head socket cap screw	1
16	Flat head socket cap screw	1
17	Cross self-tapping screw	4
18	Flange lock nut	1
19	Integrated wiring harness	1

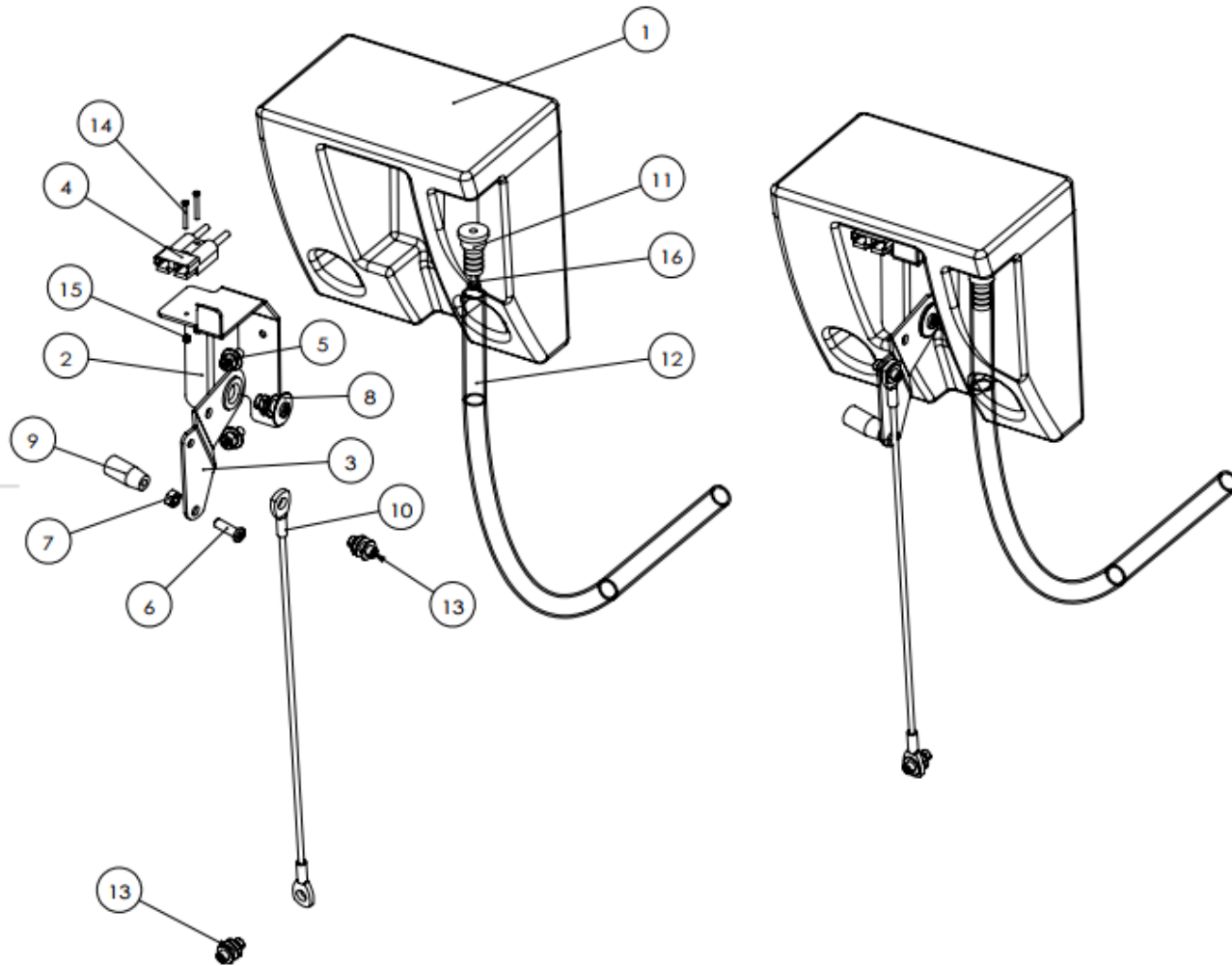




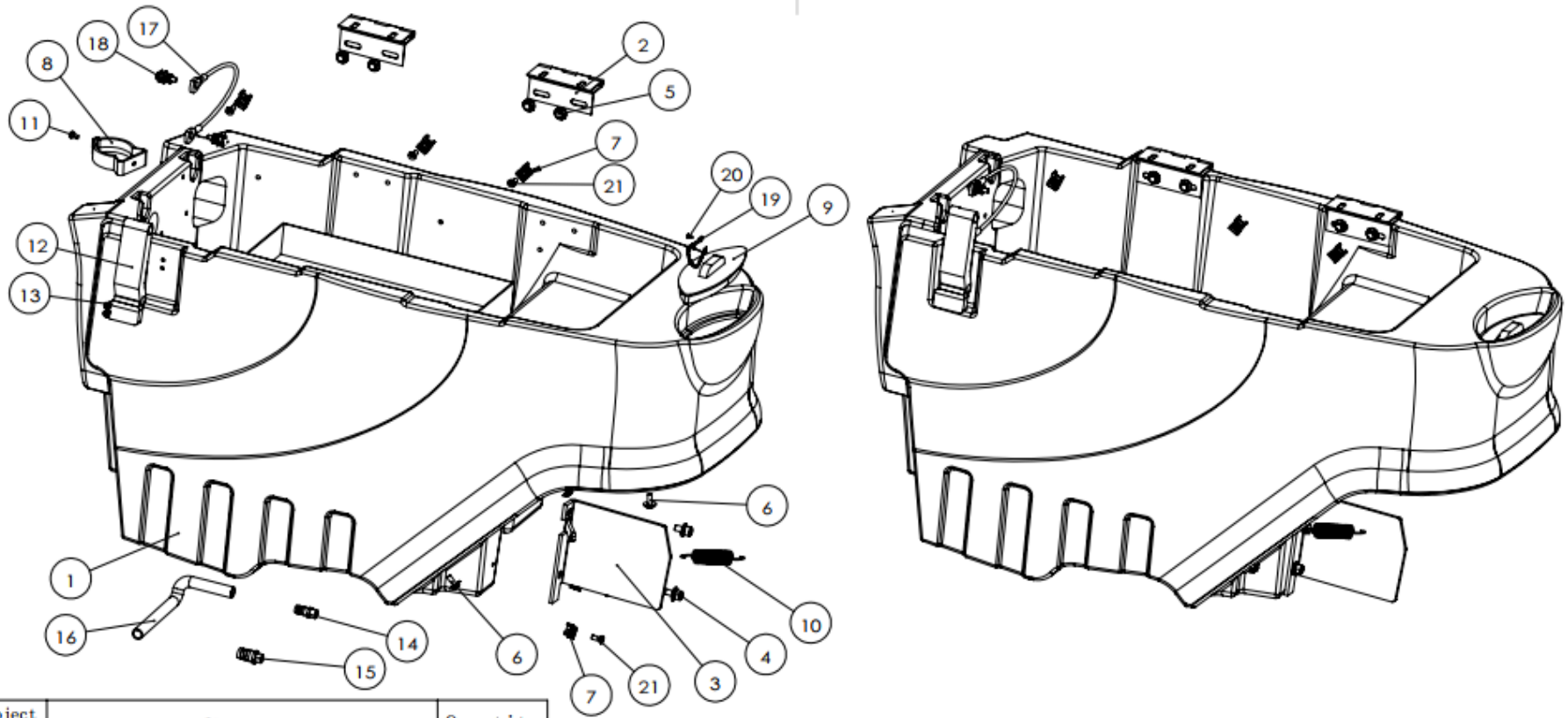
Project number	Item name	Quantity
1	Chassis assembly	1
2	Clean water tank assembly	1
3	Sewage tank assembly	1
4	Operation console assembly	1
5	Lower parts assembly	1
6	Front cover of the brush	1
7	Socket head cap screw +spring washer + flat washer	4
8	Socket head cap screw + spring washer + flat washer	2
9	Socket head cap screw +spring washer + flat washer	4
10	Suction assembly	1
11	Suction pipe	1
12	Drainage pipe	1



Project number	Item name	Quantity
1	Sewage tank	1
2	Sewage tank cover	1
3	Sewage tank cover sealing ring	1
4	Sewage tank cover connecting fitting	1
5	Cross self-tapping screw + flat washer	4
6	Silencer bracket	1
7	Bolt + flat washer + spring washer	4
8	Suction motor	1
9	Suction motor mounting pad	1
10	Silencer	1
11	Suction motor exhaust duct	1
12	Sewage tank ball valve	1
13	Ball valve mounting fitting	1
14	Wastewater tank ball valve rubber gasket	1
15	Suction pipe bracket	1
16	Suction pipe bracket elbow	1
17	Suction pipe bracket sealing gasket	1
18	M6×16 Phillips Large Pan Head Screw	2
19	Cross pan head hex socket + flat washer	2
20	Fan cover	1
21	Flat-head hex socket	6
22	Water tank latch (negative)	1
23	Flat head hex socket	2
24	Union bolt	3
25	Flange lock nut	3
26	Spring wire 1.2 OD10 L40	3



Project number	Item name	Quantity
1	Under-mounted components	1
2	Rear rake lifting structure	1
3	Rear rake adjustment structure	1
4	Charging connector	1
5	Socket head cap screw + spring washer + flat washer	2
6	Flat-head hex socket	1
7	Standard nut	1
8	Flat-head hex socket + bushing + flat washer + flat washer + spring washer + lock nut	1
9	Waterproof handle	1
10	Suction pull cord	1
11	Water level interface	1
12	Water level pipe	1
13	Socket head cap screw + flat washer + bushing + spring washer + lock nut	2
14	Cross pan head screw	2
15	Standard nut	4
16	Cross self-tapping screw	1



Project number	Item name	Quantity
1	Clean water tank	1
2	Water tank hinges	2
3	Brush motor lifting structure- Brush motor lifting guide plate	1
4	Socket head cap screw + spring washer + flat washer	2
5	Bolt + flat washer + spring washer	4
6	Cross pan head hex socket + flat washer	4
7	Wiring harness clip	5
8	Water pipe clamp	1
9	Sewage tank cover	1
10	Spring wire 2 OD18 L100	1
11	Phillips Large Pan Head Screw	1

Project number	Item name	Quantity
12	Water tank latch (Front)	1
13	Flat head hex socket	2
14	1/4" External thread (OD 12)	1
15	1/4" External thread (OD 16)	1
16	Inlet pipe	1
17	Water tank pull cord	1
18	Bolt + flat washer + bushing + flange nut	2
19	Bead chain	1
20	Cross Self-Tapping Screw	2
21	Flat Head Socket Cap Screw	5
22	Battery box	1